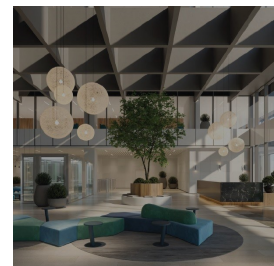
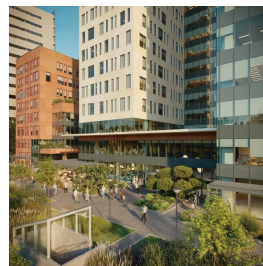


## Expozitiei

### CARACTERISTICS

- ▶ **AREA:** Expozitiei
- ▶ **Usable surface:** 300 sqm
- ▶ **Built surface:** 21000 sqm
- ▶ **Maximum height:** S+3E+7E



### Layout

14.5 Euro/sqm/month + VAT

3.3 Euro/ sqm/ month + VAT

150 Euro/ parking place/ month + VAT

### FINISHES/EQUIPMENT

- ▶ **Others:** Video Surveillance , Fire Protection, Elevator, Internet and Voice Connection , Insulated Windows , Faience, Sandstone, Garage, Administrare

### DESCRIPTION

The building is situated in Northern side of Bucharest very close to Piata Presei Libere, Kiseleff and Expozitiei Boulevards.

Facilities:

Lobby with 4.35 m usable height

false ceiling with built in LED light

BMS system;

CCTV system

raised floor

parking plots in the underground

B1 & B2 buildings

Lettable area: 21.000 sqm

Minimum area: 300 sqm

The buildings were built according with Breeam Excellency Regulation.

**14.50 EUR sqm + VAT**