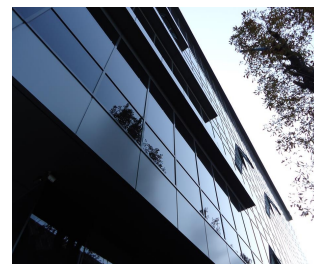
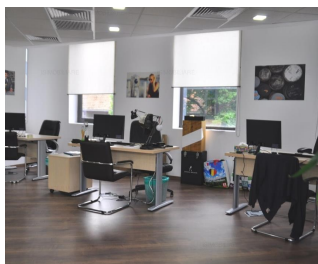
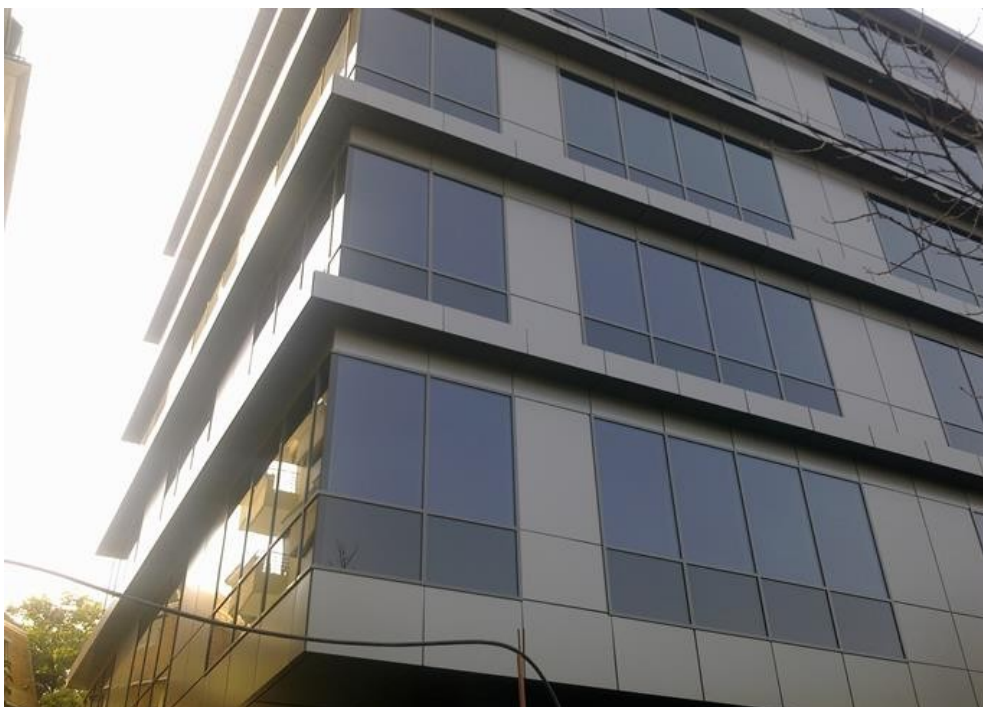


Arch of Triumph

Offices for Rent

CARACTERISTICS

- ▶ **AREA:** Arch of Triumph
- ▶ **Usable surface:** 556 sqm
- ▶ **Parking places:** 2
- ▶ **Floor:** Et. 1, Et. 5
- ▶ **Maximum height:** 3S+P+5E+6R



Layout

Available areas:

1st floor: 136 sqm

5th Floor: 420 sqm

Maintenance 3 Euro/mp/luna + VAT

FINISHES/EQUIPMENT

- ▶ **Others:** Alarm system, Fire Protection, AC, Elevator, Heating System, Internet and Voice Connection, Scara de serviciu, Asphalted access, Administrare, Garage, Parquet, Sandstone, Faience, Insulated Windows

DESCRIPTION

Office space for rent Bucharest, located in the vicinity of Kiseleff Avenue, a few minutes from Arch of Triumph and Herastrau Park.

Facilities:

- Glass curtain wall
- Suspended ceilings
- Heating and air conditioning
- fresh air intake
- Floating floor
- BMS equipment
- 2 ultrafast elevators

- Permanent security

- 9 parking spaces,
100 Euro / month / parking space.

The location has an exceptional position offering easy access to all important areas of Bucharest.

12 EUR sqm