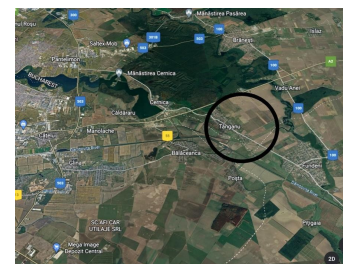
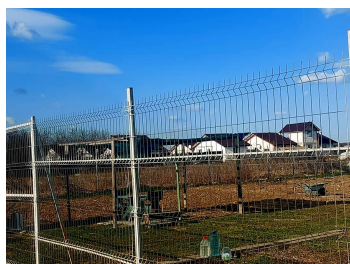
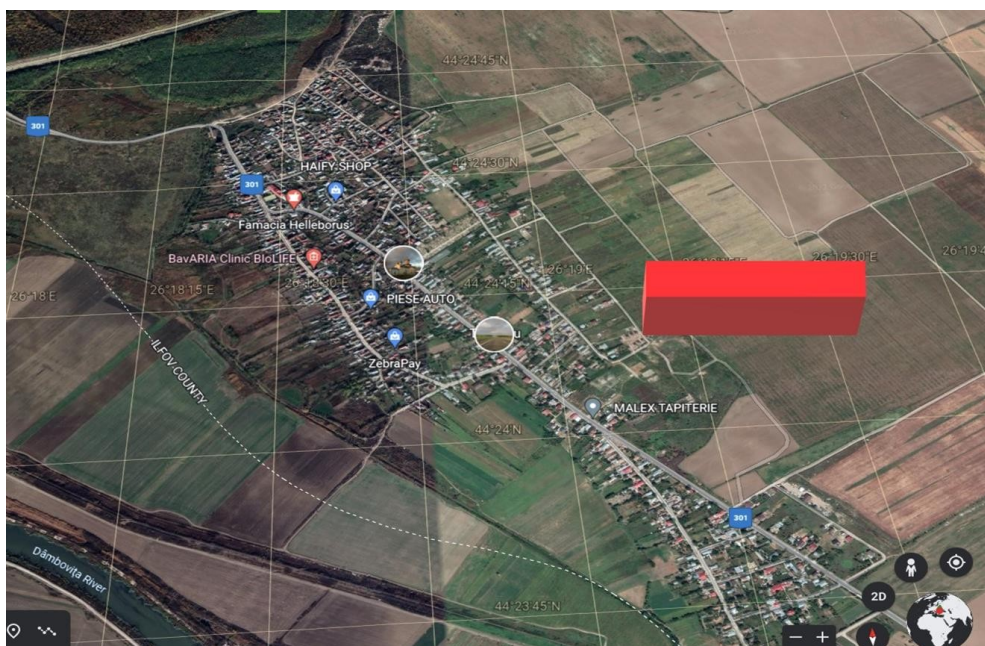


Cernica

Land for Sale

**CHARACTERISTICS**

- ▶ **AREA:** Cernica
- ▶ **Land Surface:** 20000 sqm
- ▶ **End-use:** Rezidential



**DESCRIPTION**

The land plot is situated in Tanganu - Cernica village, with large frontage to a local road, close from Ring Road and A2 Bucuresti - Constanta Highway.  
 Land plot: land plots between 1000 sqm and 20.000 sqm  
 Frontage: to a local paved road;  
 Utilities: electricity, gas very close;  
 Legal situation: the land plot is owned by an individual.

30 EUR sqm

0.01 ETHEREUM sqm