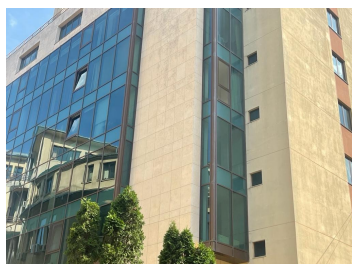


Universitate

Offices for Rent

**CARACTERISTICS**

- ▶ **AREA:** Universitate
- ▶ **Usable surface:** 1717 sqm
- ▶ **Floor:** Et.2, Et.5
- ▶ **Maximum height:** S+P+7E



**Layout**

Available surfaces:

2nd floor: 821 sqm (329.6 sqm + 492.1 sqm)

5th floor: 900 sqm + 33 sqm terrace

Maintenance: 4.8 Euro/ sqm/ month + VAT

**FINISHES/EQUIPMENT**

- ▶ **Others:** Video Surveillance , Alarm system, Fire Protection

**DESCRIPTION**

Unimed Building is situated in the downtown, at only a few minutes walking distance from Universitate Square, next to Intercontinental Hotel.

Facilities:

- modern and large reception;
- HVAC — 4 pipes
- false ceiling, carpet

- PC and phone network

- security 24 hours

Parking: 85 Euro/ parking plot/ month + VAT

16 EUR sqm + VAT

0.01 ETHEREUM sqm + VAT