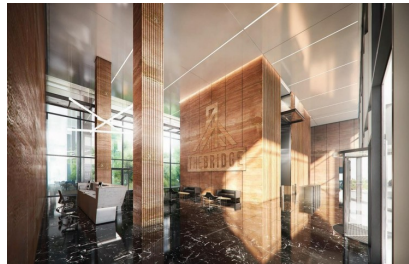
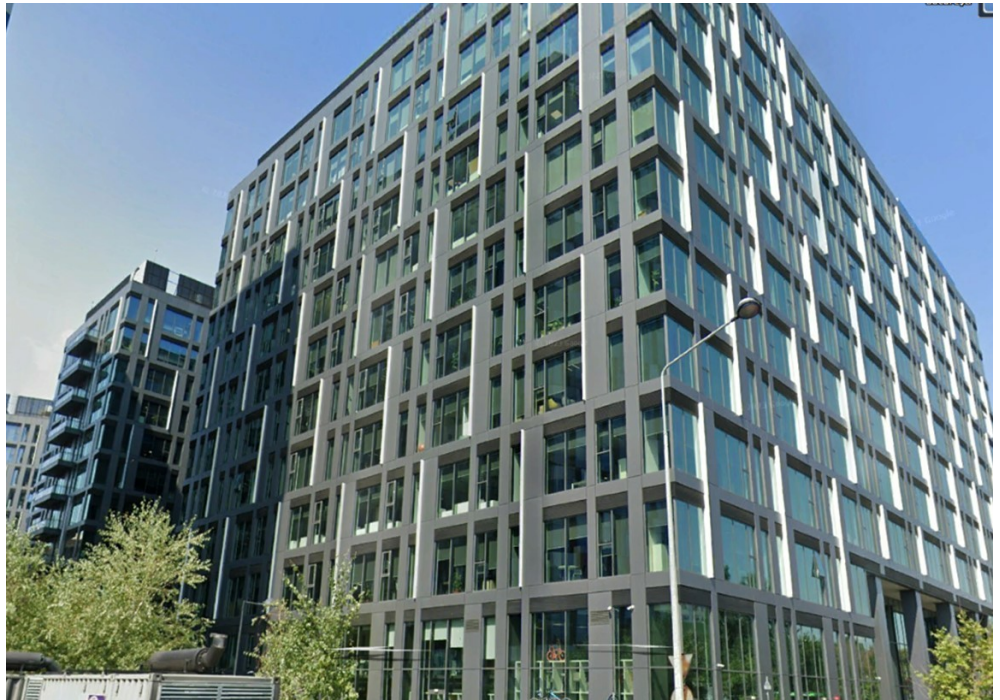


## Grozavesti

### CARACTERISTICS

- ▶ **AREA:** Grozavesti
- ▶ **Floor:** Et. 8
- ▶ **Maximum height:** 2S+P+10E



### Layout

#### 3rd Building:

8th Floor: 480 sqm

Maintenance: 3.5 Euro/sqm/month + VAT

### FINISHES/EQUIPMENT

- ▶ **Others:** Fire Protection, AC, Internet and Voice Connection , Elevator, Insulated Windows , Faience, Sandstone, Administrare, Garage

### DESCRIPTION

Office spaces offered for rent at the crossroad between 2 main roads Vasile Milea and Splaiul Independentei benefiting of easy access to Basarab Bridge and Grozavesti subway station.

#### Facilities:

- Green building
- false ceiling
- BMS
- Terrace
- HVAC - 4 pipes
- PC and phone network
- high speed elevators
- carpet
- fire system

parking places 100 Euro/ place + VAT

16 EUR sqm + VAT

0.01 ETHEREUM sqm + VAT