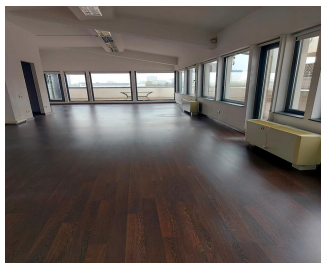
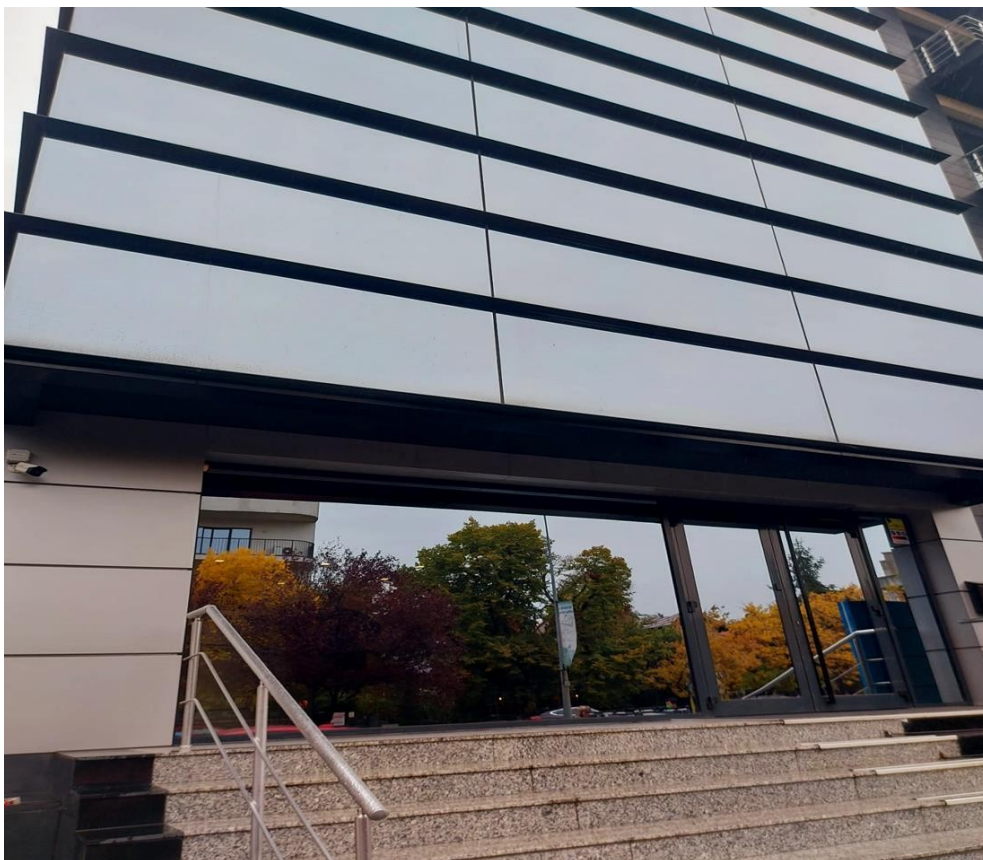


Domenii

CARACTERISTICS

- ▶ **AREA:** Domenii
- ▶ **Usable surface:** 1340 sqm
- ▶ **Floor:** Et.2, Et.3, Et.4, Mansarda
- ▶ **Maximum height:** P+4E+M



Layout

Available surfaces: 1,340 sqm

2nd Floor: 350 sqm

3rd Floor: 350 sqm

4th Floor: 350 sqm

Attic: 290 sqm

FINISHES/EQUIPMENT

- ▶ **Others:** Video Surveillance , AC, Heating System, Internet and Voice Connection , Insulated Windows , Faience, Sandstone, Parquet, Garage

DESCRIPTION

The office spaces offered for rent are situated in a building in Domenii area, very close to Arcul de Triumf or Herastrau Park.

Facilities:
carpet/ parquet

fan coil
ceramic tiles in wash rooms;
access control
video surveillance
central heating
elevator
underground parking spaces;

12 EUR sqm + VAT