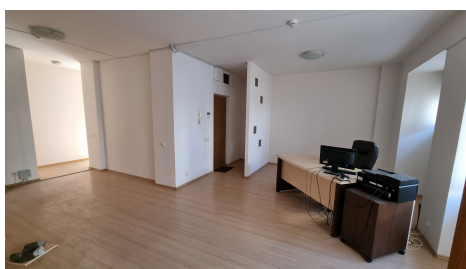


Rosetti Square

Apartment for Sale

CARACTERISTICS

- ▶ **AREA:** Rosetti Square
- ▶ **Built surface:** 650 sqm
- ▶ **Land Surface:** 165 sqm
- ▶ **Maximum height:** D+P+3E



DESCRIPTION

The building called Clara Iancu Building was realised by the architect Marcel Iancu. The property situated in the downtown area benefiting of great access to all means of transportation, to all the important point of interest in the city and a very good exposure. The building was consolidated and fully renovated with very good materials.

Semi-basement: 3 offices, bathroom, kitchen and balcony;

Ground floor: open space, 2 bathrooms, kitchen and 2 balconies;

1st Floor: open space, 2 bathrooms, kitchen and 2 balconies;

2nd Floor: open space, 2 bathrooms, kitchen and 2 balconies;

3rd Floor (attic): 4 big rooms, bathroom, kitchen and 4 balconies (duplex type)

1,800,000 EUR

23.79 BITCOIN

1,102.02 ETHEREUM

REGATTA® - Leader of Romanian Real Estate Brands
Phone: 021.232.90.12, 021.232.90.88 /// E-mail: office@regatta.ro

*Receiving this presentation represents your agreement that any negotiation regarding this property to take place through the agency of a Regatta rep