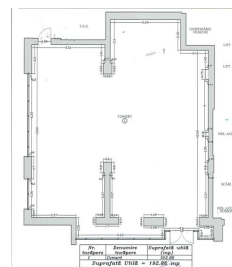


Panduri

Commercial Spaces for Rent

CARACTERISTICS

- ▶ **AREA:** Panduri
- ▶ **Usable surface:** 192.86 sqm
- ▶ **Construction year:** 2016
- ▶ **Showcase:** 22.27



Layout

DESCRIPTION

Commercial space offered for rent is situated in Academiei - Trafic Greu area and was built in 2016, benefiting of a great visibility.

Facilities:

- open space; 22.27 m shopping window; - all utilities;
- own central heating;

Available immediately;

15 EUR sqm + VAT

0.01 ETHEREUM sqm + VAT