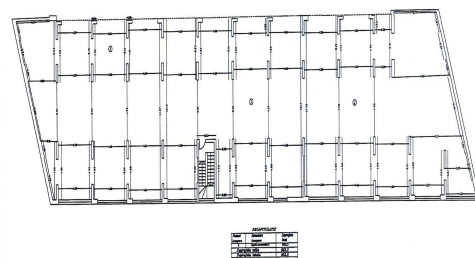
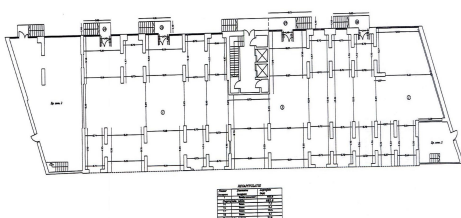
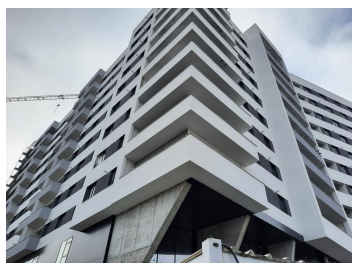


Mihai Bravu

Commercial Spaces for Rent

CARACTERISTICS

- ▶ **AREA:** Mihai Bravu
- ▶ **Usable surface:** 1540 sqm
- ▶ **Floor:** P



DESCRIPTION

The commercial space for rent is located near the intersection of Mihai Bravu with Calea Vitan exactly in front of the subway station Mihai Bravu and the pedestrian crossing between the 2 tram stops.

The space is on the ground floor, with an opening of 100 m.

It can be divided into 3-4 smaller spaces with areas between 300 and 540 sqm.

Facilities:

HVAC air conditioning, epoxy floor, sanitary groups, decorative ambient lighting system, projector lines, etc, alarm system, video surveillance, audio system installations, hydrants and extinguishing system - ISU authorization, 100 m showcase, 100 ml showcase, H under the beam 4.70 m, three-phase 380 V, installed power 310 kVA.

Available immediately

24,000 EUR + VAT

0.30 BITCOIN + VAT

12.15 ETHEREUM + VAT