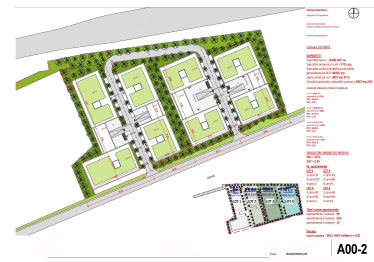


Baneasa

Land for Sale

CARACTERISTICS

- ▶ **AREA:** Baneasa
- ▶ **Usable surface:** 16000 sqm
- ▶ **POT:** 50
- ▶ **CUT:** 2.35



DESCRIPTION

The land is located in the North area of Bucharest, in the vicinity of Baneasa forest and close to Baneasa Shopping City. The area offers easy access to all points of interest from the north part of the city - private schools, restaurants, Stejarii Country Club, International airport, but also to the city center.

Land plot: 16.000 sqm

POT: 50%

CUT: 2.35

Utilities: electricity, gas, water

Hmax: SB+GF+4F

PUZ finalized, under approved