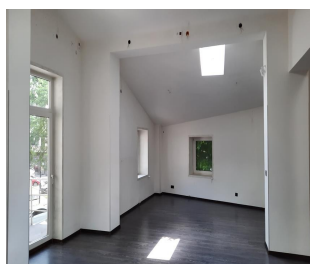
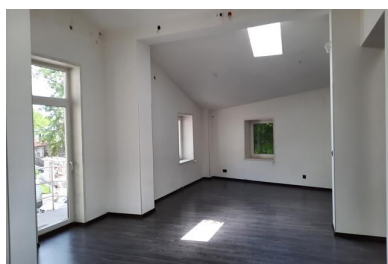


Dacia

Offices for Sale

CARACTERISTICS

- ▶ **AREA:** Dacia
- ▶ **Usable surface:** 293.55 sqm
- ▶ **Built surface:** 375.75 sqm
- ▶ **Land Surface:** 164 sqm
- ▶ **Construction year:** 1930
- ▶ **Maximum height:** S+P+E+M



Layout

Built area: 375.75 sqm

Land plot: 164 sqm

Usable area: 293.55 sqm

Basement: 27.02 sqm

Ground floor: 148.67 sqm

1st Floor: 91.84 sqm

Attic: 25.82 sqm

DESCRIPTION

The building is situated in the center of Bucharest in Mihai Eminescu area benefiting of an exceptional location and exposure. It was built in 1930 and rehabilitated and consolidated in 2003.

Facilities:

- the building is perfectly suitable for offices, commercial and medical center;
- toilets on each floor;

- 2 central heatings;

REGATTA® - Leader of Romanian Real Estate Brands
Phone: 021.232.90.12, 021.232.90.88 /// E-mail: office@regatta.ro

*Receiving this presentation represents your agreement that any negotiation regarding this property to take place through the agency of a Regatta rep