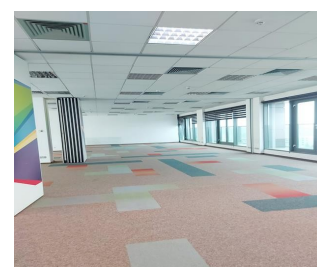
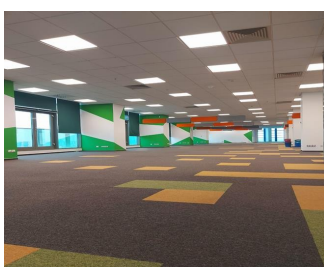
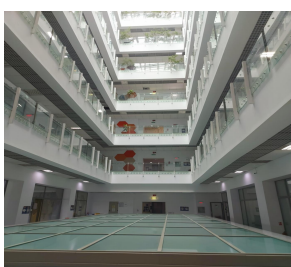


Aviatiei

Offices for Sale

CARACTERISTICS

- ▶ **AREA:** Aviatiei
- ▶ **Built surface:** 19007 sqm
- ▶ **Land Surface:** 4071 sqm
- ▶ **Construction year:** 2006
- ▶ **Maximum height:** 2S+P+8E 3S+P+E



Layout

The total surface of the **2 buildings:** 19.007 sqm

1st Building is an A class office building:

Unfolded area: 14,007 sqm

Lettable area: 10,393 sqm

Surface/ floor: 1.150 sqm

2nd Building: parking places and warehouse/ storage spaces

Unfolded area: 5,000 sqm

Land plot: 4,071 sqm

FINISHES/EQUIPMENT

- ▶ **Others:** Security, Video Surveillance , Alarm system, Fire Protection, AC, Elevator, Heating System, Internet and Voice Connection , TV Cable, Scara de serviciu, Storage rooms, Asphalted access, Administrare, Sandstone, Faience, Insulated Windows , cladire clasa A; podea suprainaltata; receptie; acces control;

DESCRIPTION

A class office buildings for sale situated in northern side of Bucharest, in Pipera area, very close to many other business centers. There

are buses which connect the building with the subway station Pipera.

Facilities:

- open space and partition;
- 5 elevators for persons, 2 staircase;
- false ceiling, raised floor;
- 2 power generator;
- BMS;
- IT & Data System;
- heating / cooling system 4 pipes;
- security 24h, alarm system;
- reception;
- parking places underground