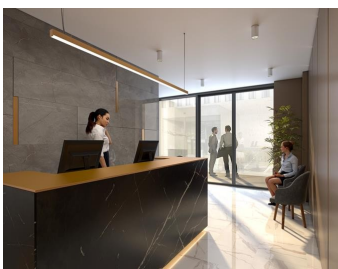
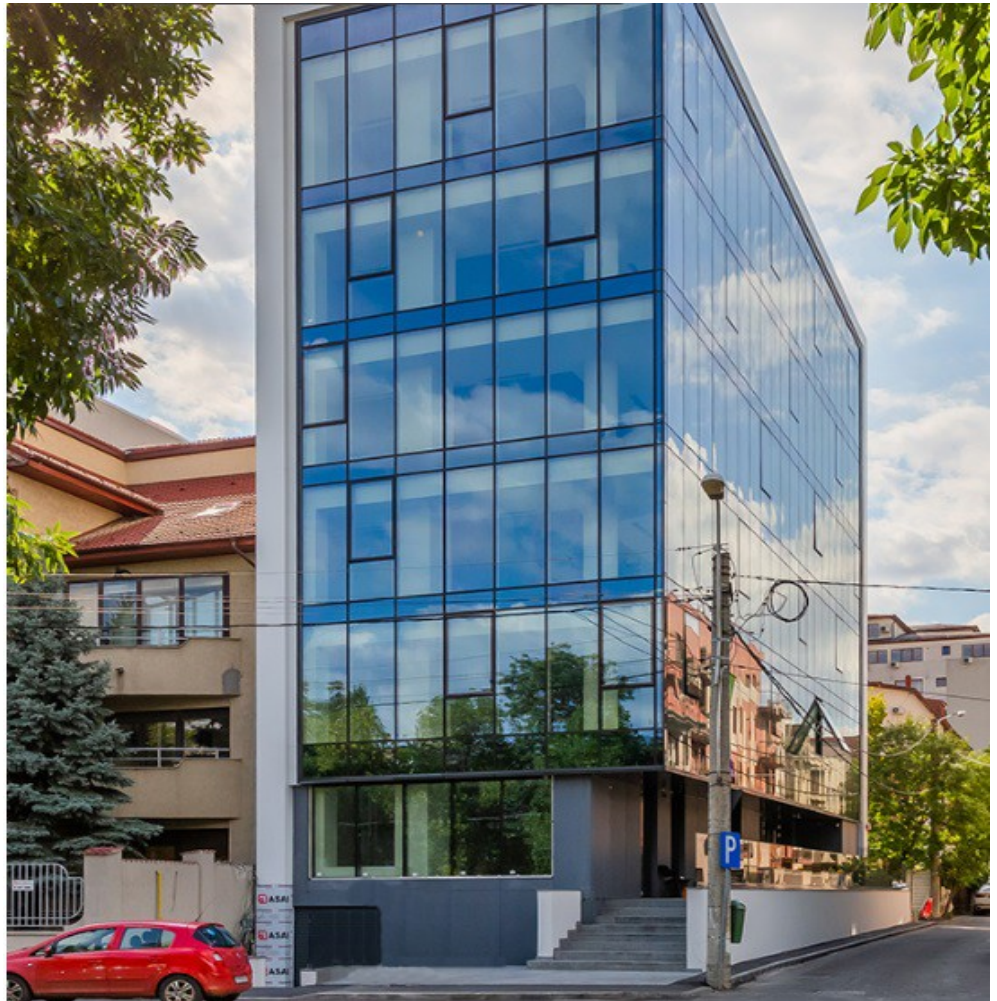


Herastrau

Offices for Sale

CARACTERISTICS

- ▶ **AREA:** Herastrau
- ▶ **Built surface:** 1968 sqm
- ▶ **Land Surface:** 450 sqm
- ▶ **Parking places:** 11
- ▶ **Construction year:** 2004
- ▶ **Maximum height:** D+P+4 E



Layout

Built area: 1.968 sqm

Terraces: 153 sqm

Total land plot: 450 sqm

FINISHES/EQUIPMENT

- ▶ **Others:** Fire Protection, AC, Elevator, Heating System, Internet and Voice Connection , TV Cable, Asphalted access, Administrare, Garage, Sandstone, Faience, Insulated Windows

DESCRIPTION

Office building for sale located very close to Herastrau Park, on Nicolae Caramfil Boulevard.

Facilities:

- open space with easy partitioning
- air conditioning fan coil
- Schindler elevator
- modern amenities;
- 2 entrances;
- own central heating;
- fire prevention system;
- Parking places: 6 underground and 5 outside