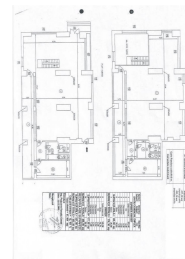
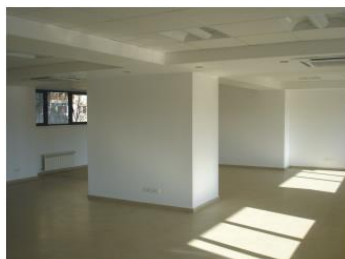


Nicolae Titulescu

Commercial Spaces for Rent

CARACTERISTICS

- ▶ **AREA:** Nicolae Titulescu
- ▶ **Usable surface:** 383.2 sqm
- ▶ **Land Surface:** 67.96 sqm
- ▶ **Parking places:** 2
- ▶ **Maximum height:** P+M



Layout

Total usable area: 383.2 sqm

Ground floor: 206.9 sqm

Mezanine: 176.3 sqm

Afferent land: 67.96 sqm

DESCRIPTION

Commercial space for sale situated in Nicolae Titulescu Boulevard at the ground floor and mezzanine of a residential building.

Facilities:

- open space;
- 2 sanitary groups/ level;
- arranged;
- own central heating;

- parking places for 2 cars;
Maintenance price: 2 Euro/sqm/month+ VAT

15 EUR sqm + VAT