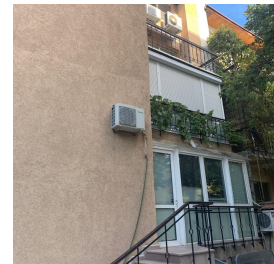
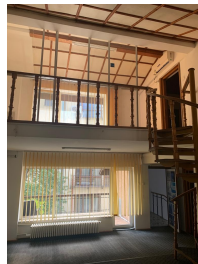


Floreasca

CARACTERISTICS

- ▶ **AREA:** Floreasca
- ▶ **Usable surface:** 360 sqm
- ▶ **No. of Rooms:** 12
- ▶ **No. of Bathrooms:** 6
- ▶ **Maximum height:** S+D+P+1E+M



FINISHES/EQUIPMENT

- ▶ **Others:** AC, Heating System, Internet and Voice Connection , Insulated Windows , Faience, Sandstone, Parquet, Storage rooms

DESCRIPTION

Office spaces offered for rent in a villa in Floreasca area, close to Floreasca square.

Basement: technical room and storage spaces;

Semi-basement: 2 rooms;

Ground floor: 2 rooms, reception and bathroom;

1st Floor: 4 rooms, 2 bathroom;

Attic: open space, 2 rooms, bathroom;

Facilities:

parquet

ceramic tiles;

insulated windows;

air conditioning;

4,000 EUR

0.04 BITCOIN

1.24 ETHEREUM