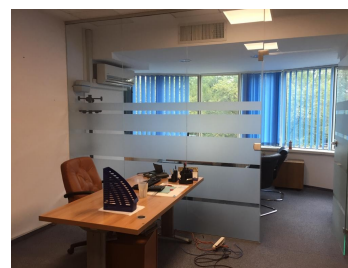


Aviatorilor

CARACTERISTICS

- ▶ **AREA:** Aviatorilor
- ▶ **Usable surface:** 1940 sqm
- ▶ **Land Surface:** 475 sqm
- ▶ **Parking places:** 10
- ▶ **Maximum height:** S+P+6E



Layout

Surfaces:

1st, 2nd, 3rd, Floor: 259.39 sqm

Land plot: 475 sqm

Parking plots: 10 parking places;

Rental prices: Euro 3,500/ month/ floor

Maintenance: 2 Euro/ sqm/month

FINISHES/EQUIPMENT

► **Others:** AC, Elevator, Heating System, Internet and Voice Connection , Insulated Windows , Faience, Sandstone, Storage rooms

DESCRIPTION

The office building offered for rent is situated in the immediate vicinity of Charles de Gaulle Square and many important institutions, bank headquarters, museums, hospitals, subway station and Herastrau Park.

Facilities:

reception,

own central heating;

false ceiling

2 elevators;

PC and phone wiring

The office building will be completely refurbished;