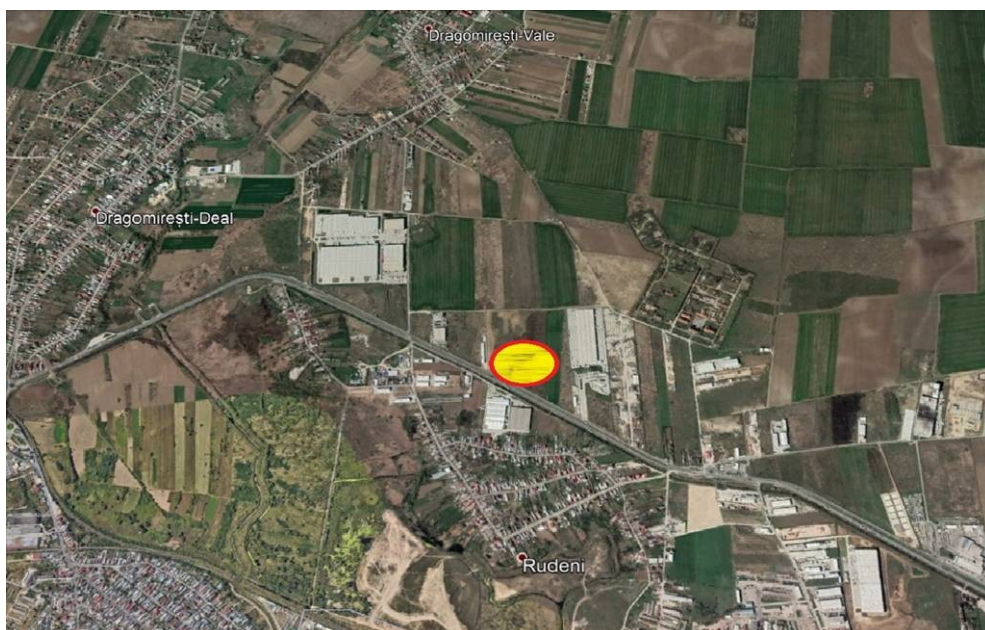


Ring Road

Land for Sale

CARACTERISTICS

- ▶ **AREA:** Ring Road
- ▶ **Land Surface:** 27437 sqm
- ▶ **POT:** 60%
- ▶ **End-use:** Rezidential
- ▶ **Opening:** 76



DESCRIPTION

Land plot offered for sale situated in North- Western side of Buhcarest, with great access to the Ring Road. Due to its location and to the large frontage to a main street the land plot is suitable for storage or manufacturing spaces with showroom and offices.

Land plot: 27,437 sqm;

Frontage: 76 m;

Urbanism information:

POT max: 60 %

CUT: 6 mc/ sqm;

Hmax: 9 m

55 EUR sqm + VAT

0.02 ETHEREUM sqm + VAT