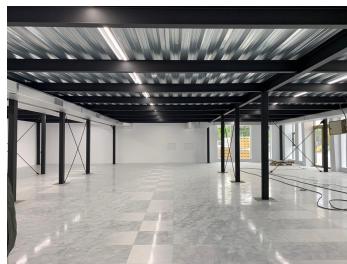


Militari

CARACTERISTICS

- ▶ **AREA:** Militari
- ▶ **Usable surface:** 3500 sqm
- ▶ **Maximum height:** P+1



Layout

Available areas: 1,700 - 3,500 sqm

Prices:

10 Euro/sqm/month + VAT

Maintenance: 2.5 Euro/sqm/month + VAT

DESCRIPTION

The office building is situated in western side of Bucharest very close to Iuliu Maniu Boulevard and Preciziei subway station. The building has large open spaces with a lot of natural light.

Facilities:

open space

HVAC

raised floor

facade with operable windows

modern toilets and kitchenette

parking places (40-60 Euro/parking place + VAT)

10 EUR sqm + VAT

REGATTA® - Leader of Romanian Real Estate Brands
Phone: 021.232.90.12, 021.232.90.88 /// E-mail: office@regatta.ro

*Receiving this presentation represents your agreement that any negotiation regarding this property to take place through the agency of a Regatta rep