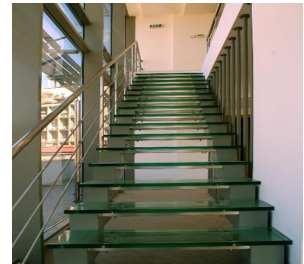


Calea Victoriei

Offices for Rent

CARACTERISTICS

- ▶ **AREA:** Calea Victoriei
- ▶ **Usable surface:** 418 sqm
- ▶ **Parking places:** 21
- ▶ **Floor:** Et.1, Et.2
- ▶ **Maximum height:** S+P+4E



Layout

1st Floor: 90 sqm;

2nd Floor: 226 sqm + 102 sqm

FINISHES/EQUIPMENT

- ▶ **Others:** Parking, Video Surveillance , Alarm system, Fire Protection, AC, Elevator, Asphalted access, Sandstone, Faience, Insulated Windows

DESCRIPTION

Office building for rent situated in Cismigiu Park area, very close to Sala Palatului and Victoriei Avenue. The location allows direct and easy access to Eroilor and Izvor subway stations being at only 150 m away from tram.

The building has a beautiful architecture and was renovated for offices;
conference room for 80 persons;

false ceiling

fire prevention system;

anti-static carpet

2 elevators

parking places: 21 units in the underground

Rental price:

12 Euro/ sqm/month+ VAT

4 Euro/ sqm/month + VAT- maintenance

12 EUR sqm + VAT

0.01 ETHEREUM sqm + VAT