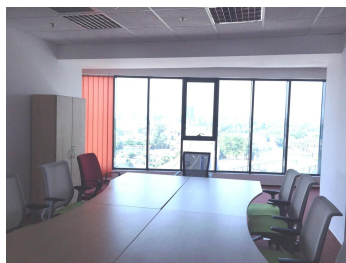
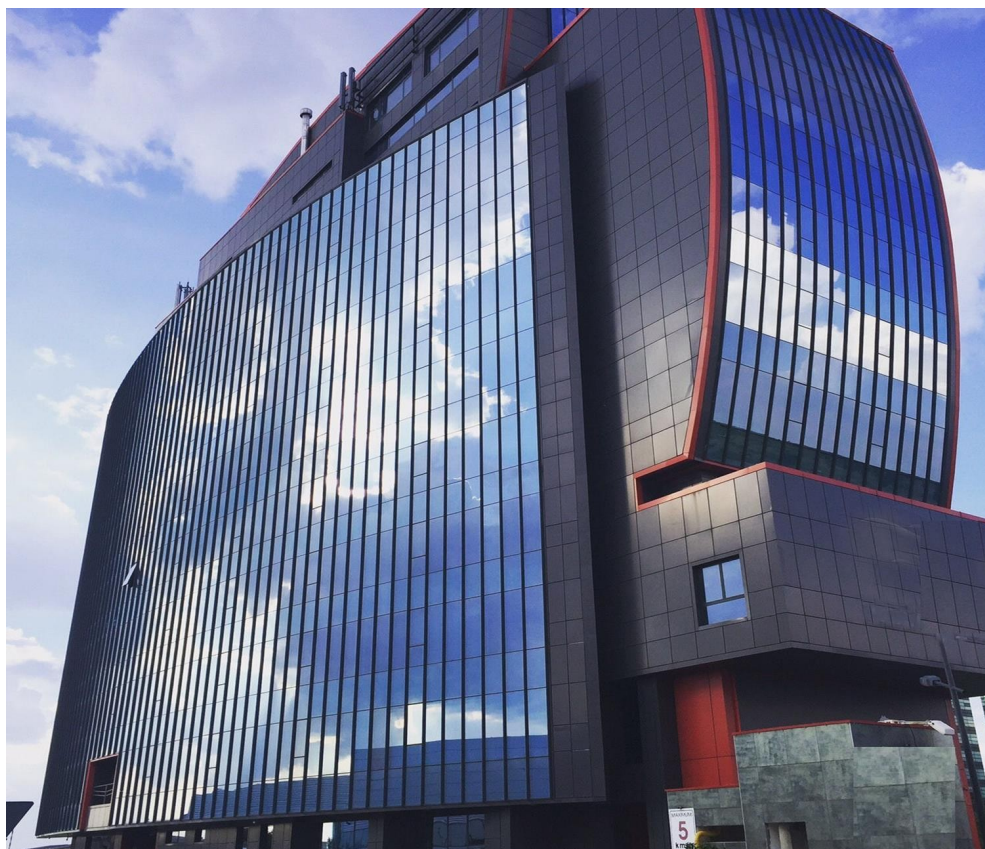


Pipera

Offices for Rent

CARACTERISTICS

- ▶ **AREA:** Pipera
- ▶ **Usable surface:** 1724 sqm
- ▶ **Floor:** 2,8,9
- ▶ **Maximum height:** S+P+M+10 E



Layout

Available areas:

2nd Floor: 237 sqm; 428 sqm

8th floor: 298 sqm; 161 sqm

9th Floor: 600 sqm + terrace (100 sqm)

FINISHES/EQUIPMENT

- ▶ **Others:** Parking, Security, Alarm system, Fire Protection, intercall, AC, Elevator, Heating System, Internet and Voice Connection , TV Cable, Asphalted access, Garage, Sandstone, Faience, Insulated Windows , open space/nivel; lumina naturala pe toate laturile; grupuri sanitare si bucatarie amenajate; climatizare-HVAC; sisteme moderne de telecomunicatii; generator de rezerva; control acces; securitate 24h/24h

DESCRIPTION

Office building offered for rent is situated in Pipera-Tunari, next to Porsche Nord showroom ; The indicated area has known a great development in the last years.

Facilities:

- glass partitions
- natural light on all sides
- modern telecommunication systems

- sanitary groups - air conditioning-HVAC
- thermal power plant
- indoor parking spaces 4 (150 Euro + VAT / month)
- backup generator
- security, reception
- access control
- security 24h / 24h

Rental prices: 8 €/sqm/month + VAT

Maintenance: 5,5 €/sqm/month + VAT

8 EUR sqm + VAT