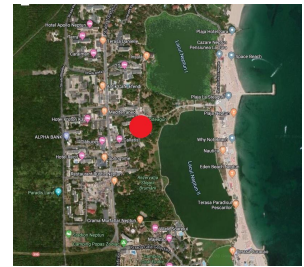


Neptun

Land for Sale

CHARACTERISTICS

- ▶ **AREA:** Neptun
- ▶ **Usable surface:** 11000 sqm
- ▶ **POT:** 60
- ▶ **CUT:** 4.8
- ▶ **End-use:** Rezidential
- ▶ **Opening:** 150



DESCRIPTION

Land located in Neptun, in a unique location in the vicinity of Lake Neptun and a short distance from the beach.

Direct view to the Black Sea and Lake Neptun.

In the vicinity of the land there is a park and the natural reservation of Stejarii Brumarii.

Opening - 150 m street and immediate access to the main road.

On the ground are partially demolished buildings.

Urbanism Certificate of information.

Property of legal entity — SPV.

Possibility to sell social shares.

Vicinity:

- Neptun beach;
- Lake Neptun;
- Brumarii Oak Reservation;
- Comorova forest.

According to PUG and CU it is permitted to build:

- hotels, pensions, travel agencies;
- underground and multi-storey car parks;
- restaurants, bars,cafes;
- house.

Co-financed project from the Cohesion Fund through the Large Infrastructure Operational Program 2014—2020

Jupiter area — Neptuncoastal protection 2,550 ml

30 ha newly created beach.