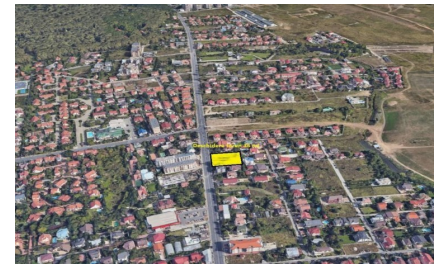
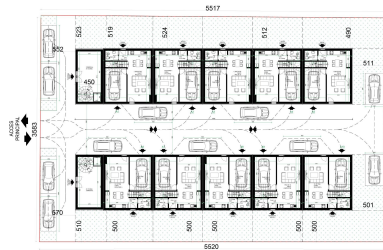


Pipera

Land for Sale

CARACTERISTICS

- ▶ **AREA:** Pipera
- ▶ **Usable surface:** 2000 sqm
- ▶ **POT:** 40
- ▶ **CUT:** 2.2
- ▶ **End-use:** Constructii Retail
- ▶ **Opening:** 36
- ▶ **No. of openings:** 1



DESCRIPTION

The land plot offered for sale is situated in Pipera area and is an excellent option for development of mixed buildings offices, services, apartment, retail. The land plot has an opening of 36 m to a main street.

Land plot area: 2,000 sqm

Utilities: sewerage, water, electricity, gas;

Urbanism coefficient:

POT max 40%

CUT max 2.2

Sale price: 900 Euro/ sqm + VAT

900 EUR sqm + VAT

0.01 BITCOIN sqm + VAT

0.34 ETHEREUM sqm + VAT