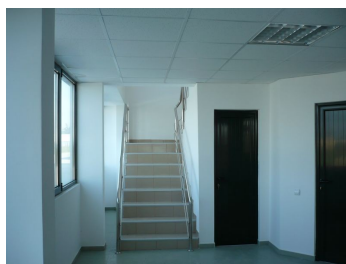


Buftea

Industrial Spaces for Rent

### CARACTERISTICS

- ▶ **AREA:** Buftea
- ▶ **Usable surface:** 20000 sqm
- ▶ **Built surface:** 25000 sqm
- ▶ **Land Surface:** 60000 sqm
- ▶ **Owner:** Legal entity
- ▶ **Parking places:** Da
- ▶ **Construction year:** 2019



### Layout

1st warehouse: 1,250 sqm + 352 sqm offices (GF + 1);

2nd warehouse: 1,250 sqm + 352 sqm offices (GF+1);

3rd warehouse: 640 sqm;

4th warehouse: 432 sqm + 144 sqm offices.

### FINISHES/EQUIPMENT

- ▶ **Others:** Security, Alarm system, Fire Protection, AC, Heating System, Internet and Voice Connection , Storage rooms, Asphalted access, Administrare, Hale, Parquet, Sandstone, Faience, Insulated Windows

### DESCRIPTION

The logistic park is situated in Buftea, Tamasi Road - Ilfov County, at only 500 m away from Buftea railway station. The access is very easy to make both from Bucuresti - Targoviste (DN1A) road and from Bucuresti - Ploiesti road (DN1).

Description:

maximum height: 9 m

minimum height: 7m

heavy truck access doors (4m X4m);

smoke detectors;

