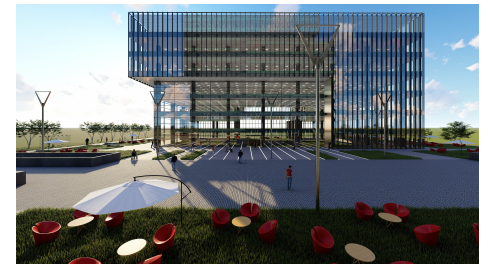
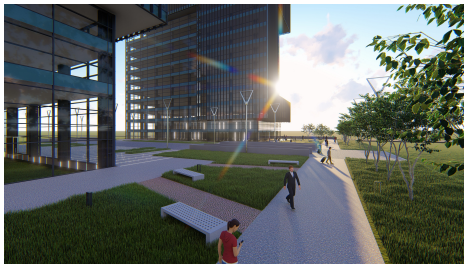


## Politehnica

### CARACTERISTICS

- ▶ **AREA:** Politehnica
- ▶ **Usable surface:** 10177 sqm
- ▶ **Built surface:** 11153 sqm
- ▶ **Parking places:** 340
- ▶ **Construction year:** 2021
- ▶ **Maximum height:** 2S+P+5E+1E tehnic



### Layout

Ground floor: 337 sqm

5th Floor: 1,424 sqm

### FINISHES/EQUIPMENT

- ▶ **Others:** Security, Fire Protection, Alarm system, Video Surveillance , AC, Elevator, Heating System, Internet and Voice Connection , TV Cable, Administrare, Garage, Insulated Windows , Sandstone, Faience

### DESCRIPTION

The office building offered for rent, situated in the central western side of Bucharest the newest business corner of the city, in the center of an animated young people community nest to very close to Polytechnic University. The building is situated close to many commercial centers, the subway station Petrache Poenaru (former Semanatoarea) is situated inside this business park, the project benefiting of all means of transportation, and of an extremely easy access to all the important point of interest in the city.

Facilities:

- A+ class office building;
- open space;
- false ceiling
- Natural light;
- BMS;
- HVAC;
- Smoke/ fire detectors;
- Fire prevention system;
- Access control;
- Server rooms;
- Administration and property management;
- Restaurant;
- Locker room with showers;
- Coffee shop;
- Supermarket;

6 elevators;  
LED lights;  
Parking places;  
Bicycle parking;  
Loading stations for electric vehicles;  
services for maintenance of the green areas;  
VRF Mitsubishi Electric ventilation system;  
Under authorization for the BREEAM Excellent  
Reception;  
opening windows;  
Maintenance:  
3 Euro/sqm/month+ VAT

14.50 EUR sqm + VAT

0.01 ETHEREUM sqm + VAT