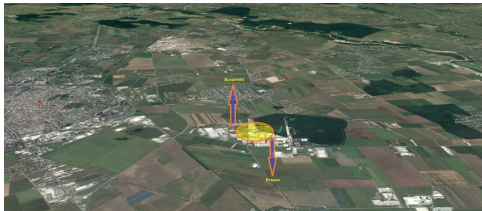


Ploiesti

Industrial Spaces for Sale

### CARACTERISTICS

- ▶ **AREA:** Ploiesti
- ▶ **Usable surface:** 4340 sqm
- ▶ **Land Surface:** 12400 sqm
- ▶ **Construction year:** 2017



### Layout

Surfaces:

Total land plot: 12,400 sqm

Office area: 1,340 sqm

Storage area: 3,000 sqm

1st warehouse: 1,600 sqm

2nd warehouse: 1,400 sqm

Concrete platform: 5,500 sqm

### FINISHES/EQUIPMENT

- ▶ **Others:** AC, Heating System, Internet and Voice Connection , Elevator, Storage rooms, Insulated Windows , Garage, Administrare, Sandstone, Faience

### DESCRIPTION

Industrial park situated at only 5 km distance from Ploiesti, in Eastern side of the city very close to Bucuresti-Brasov Highway and the city's ring road.

Offices:

A class office building: 1,340 sqm

Facilities:

GF+1 F (670 sqm/ level)

concrete platform with 50 cars capacity;

high quality of materials: granite, stainless steel railings, wooden doors;

video monitoring;

fire prevention system with alarm system;

anti-burglary system;

toilet on each floor;

conference room;

fully equipped kitchen;

air conditioning system;  
Industrial spaces: 3,000 sqm  
Facilities:  
usable height 7m  
380V  
all utilities: water, gas, sewerage,electricity;  
own power transformer (400 Kva);  
monitoring and fire prevention system;  
anti burglary system;  
industrial floor;  
ISU buffer tank with required pump group;  
own exterior system for hydrants;  
industrial loading/ unloading doors;  
light system for exterior  
smoke vents  
The logistic park is 85% rented.