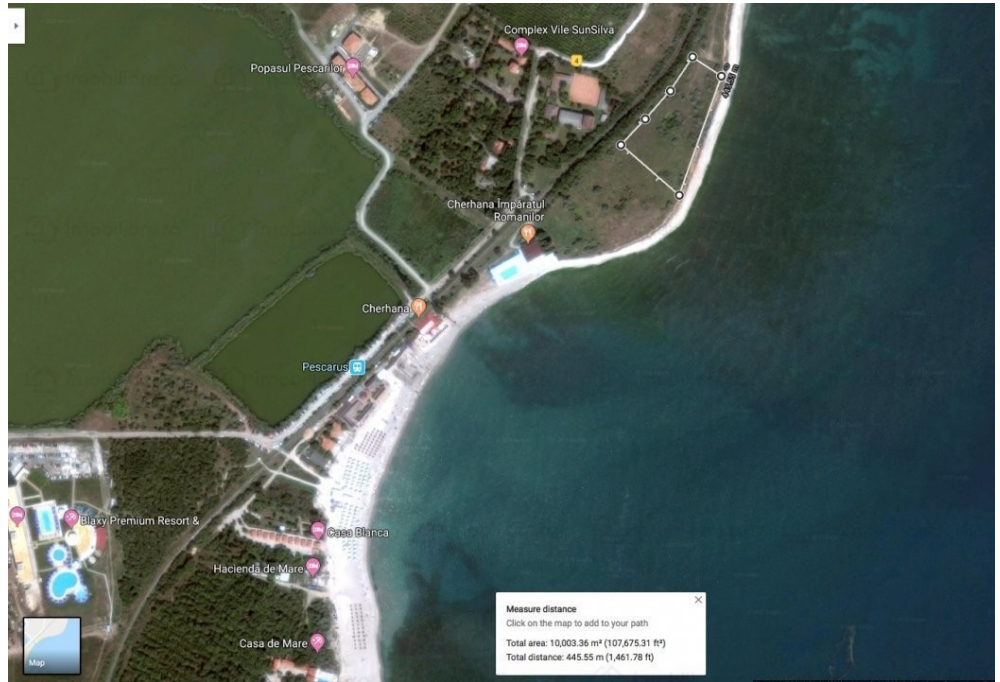


Olimp

Land for Sale

### CARACTERISTICS

- ▶ **AREA:** Olimp
- ▶ **Usable surface:** 10000 sqm
- ▶ **End-use:** Rezidential
- ▶ **Opening:** 180



### DESCRIPTION

The land is located in Olimp-23 August area, on the seashore.  
The land has 180 m opening to the sea, and is on a high ground, 10m above the beach.  
In 2008 there is a PUZ with GF+4F, GF + 10F height regime.

1,250,000 EUR

22.04 BITCOIN

399.06 ETHEREUM