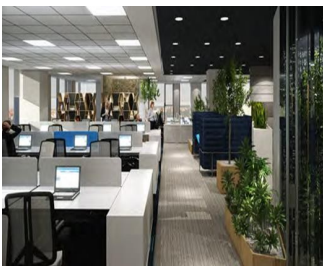


Calea Victoriei

CARACTERISTICS

- ▶ **AREA:** Calea Victoriei
- ▶ **Usable surface:** 9000 sqm
- ▶ **Land Surface:** 1767 sqm
- ▶ **Parking places:** 130
- ▶ **Construction year:** 2021
- ▶ **Maximum height:** 3S+P+9E



FINISHES/EQUIPMENT

- ▶ **Others:** Fire Protection, Video Surveillance, AC, Internet and Voice Connection, Insulated Windows, Faience, Sandstone, Parquet, Garage, Elevator

DESCRIPTION

Office building class A situated in an exceptional location, ultracentral, on Victoriei Avenue, close to Victoriei Square.

Facilities:

- green building;
- false ceiling;
- BMS;
- usable height 3m;
- voice/ data network;
- high speed and capacity elevator;
- raised floor
- fire prevention system;
- 14 parking places

4th floor: 490 sqm

Terrace: 27 sqm

The office building benefits of a great access to all means of transportation.

Maintenance: 4 Euro/ sqm/month + VAT

Parking places: 120 Euro/place + VAT

Terrace: 9.25 Euro/ sqm/ month + VAT

18.50 EUR sqm

0.01 ETHEREUM sqm

REGATTA® - Leader of Romanian Real Estate Brands
Phone: 021.232.90.12, 021.232.90.88 /// E-mail: office@regatta.ro

*Receiving this presentation represents your agreement that any negotiation regarding this property to take place through the agency of a Regatta rep