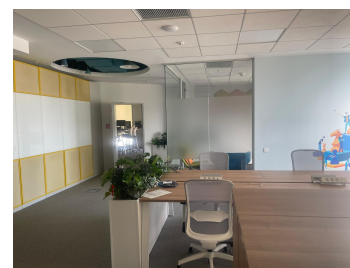
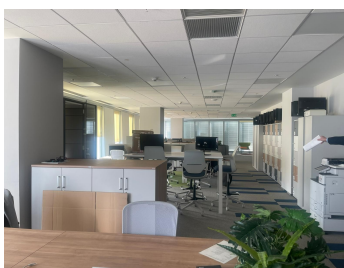
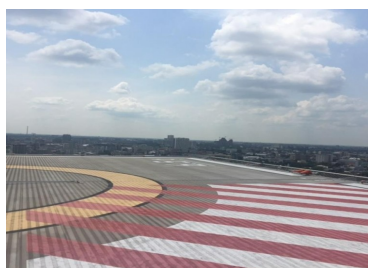


## Calea Dorobantilor

### CARACTERISTICS

- ▶ **AREA:** Calea Dorobantilor
- ▶ **Usable surface:** 920 sqm
- ▶ **Maximum height:** 2S+P+M+7E



### DESCRIPTION

Office building offered for rent is situated in the central area at only a few minutes distance from Dorobanti, Victoriei Square, Aviatorilor Boulevard, Government Building.

Facilities:

- green building
- HVAC air conditioning system;
- access control
- false ceiling with built in lights
- raised floor;
- BMS system;
- coffee shop/ restaurant;
- heliport

- conference room;
- 4 panoramic elevators;
- parking places

Available areas:

6th Floor: 350 sqm;

8th Floor: 570 sqm

Maintenance: 4.2 Euro/ sqm/ month + VAT

**20 EUR sqm + VAT**

**0.01 ETHEREUM sqm + VAT**