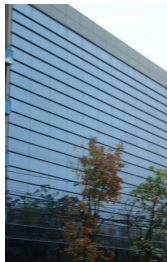


## Herastrau

## Offices for Rent

### CHARACTERISTICS

- ▶ **AREA:** Herastrau
- ▶ **Usable surface:** 1900 sqm
- ▶ **Floor:** Et. 2
- ▶ **Maximum height:** 2S+P+5 E
- ▶ **Subdivision:** open space



### Layout

2nd Floor: 800 - 1,900 sqm

- Maintenance: 3.8 €/sqm/month + VAT
- Parking places: 100 €/place/month + VAT

### DESCRIPTION

The building is located very close to Herastrau Park, on Nicolae Caramfil Boulevard.

Facilities:

- open space
- air conditioning
- 3 elevators
- fitted-out sanitary groups
- reception

- security

11.50 EUR sqm + VAT

REGATTA® - Leader of Romanian Real Estate Brands  
Phone: 021.232.90.12, 021.232.90.88 /// E-mail: [office@regatta.ro](mailto:office@regatta.ro)

\*Receiving this presentation represents your agreement that any negotiation regarding this property to take place through the agency of a Regatta rep