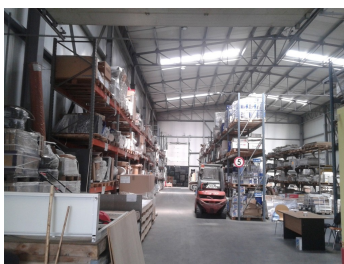
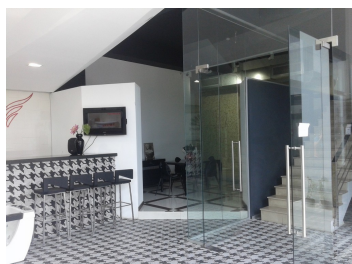


## Militari

## Industrial Spaces for Rent

### CARACTERISTICS

- ▶ **AREA:** Militari
- ▶ **Usable surface:** 1600 sqm
- ▶ **Construction year:** 2008
- ▶ **Maximum height:** P+3



### Layout

Offices/ showroom: 1,600 sqm

Warehouse 1.000 sqm; usable height: 9 m;

heavy truck access door.

### FINISHES/EQUIPMENT

- ▶ **Others:** Video Surveillance , AC, Elevator, Internet and Voice Connection , TV Cable, Storage rooms, Asphalted access, Sandstone, Faience, Insulated Windows

### DESCRIPTION

Property offered for inchiriere situated in the immediate vicinity of the Commercial Gallery Carrefour Militari, having a great access both to A1 Highway and to the Ring Road.

open space;

sanitary group/ level;

3 sanitary groups at the 3rd floor;

centralized installation both for heating and for cooling;

**5 EUR sqm**