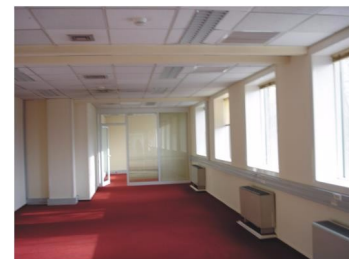


Presei Libere Square

CARACTERISTICS

- ▶ **AREA:** Presei Libere Square
- ▶ **Usable surface:** 700 sqm
- ▶ **Construction year:** 1994
- ▶ **Maximum height:** S+P+4E



DESCRIPTION

The building is situated in Northern area very close to Piata Presei Libere, Kiseleff Boulevard and Expozitiei Boulevard. Due to the location the access both to the center of the city and to Otopeni Airport is easy to be done.

Facilities:

- carpet, false ceiling with built in lamps;
- fire system prevention system;
- security 24 h;
- parking places (100 Euro + VAT/ underground parking places)
(70 Euro + VAT/ outside parking places)

In the maintenance's price are included the expenses for the rented space, except the internet and the phone.

15 Euro/sqm/month + VAT - for a space smaller than 200 sqm

13 Euro/sqm/month + VAT - for a space bigger than 200 sqm

maintenance: 5.25 Euro/sqm/month + VAT

Available area: 100-700 sqm

13 EUR sqm