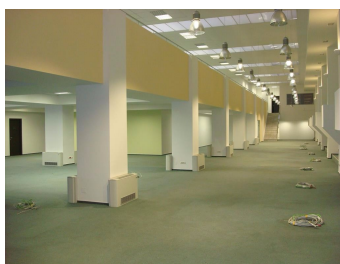


Theodor Pallady

CARACTERISTICS

- ▶ **AREA:** Theodor Pallady
- ▶ **Usable surface:** 1231 sqm
- ▶ **Parking places:** Da
- ▶ **Floor:** 1
- ▶ **Maximum height:** P+3E



Layout

1st Floor: 220 sqm; 250 sqm;

1st Floor: 520 sqm + 241 sqm;

DESCRIPTION

Office building offered for rent situated on Theodor Pallady Boulevard next to Policolor. The space benefits of a great visibility being situated at only 500 m distance from Bucuresti - Constanta highway. The office building benefits of a great access to all means of transportation including the subway station Nicolae Teclu.

Facilities:

- false ceiling;
- Italian doors
- ceramic tiles - Ital Granit;
- carpet;
- kitchenette;
- PC and phone network;
- centralized air conditioning;

Maintenance: 3,3 Euro/sqm/month + VAT

9 EUR sqm + VAT

REGATTA® - Leader of Romanian Real Estate Brands
Phone: 021.232.90.12, 021.232.90.88 /// E-mail: office@regatta.ro

*Receiving this presentation represents your agreement that any negotiation regarding this property to take place through the agency of a Regatta rep