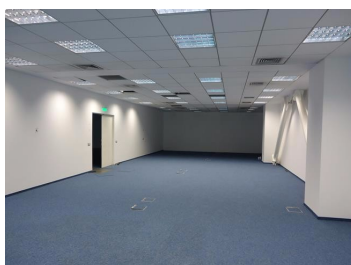
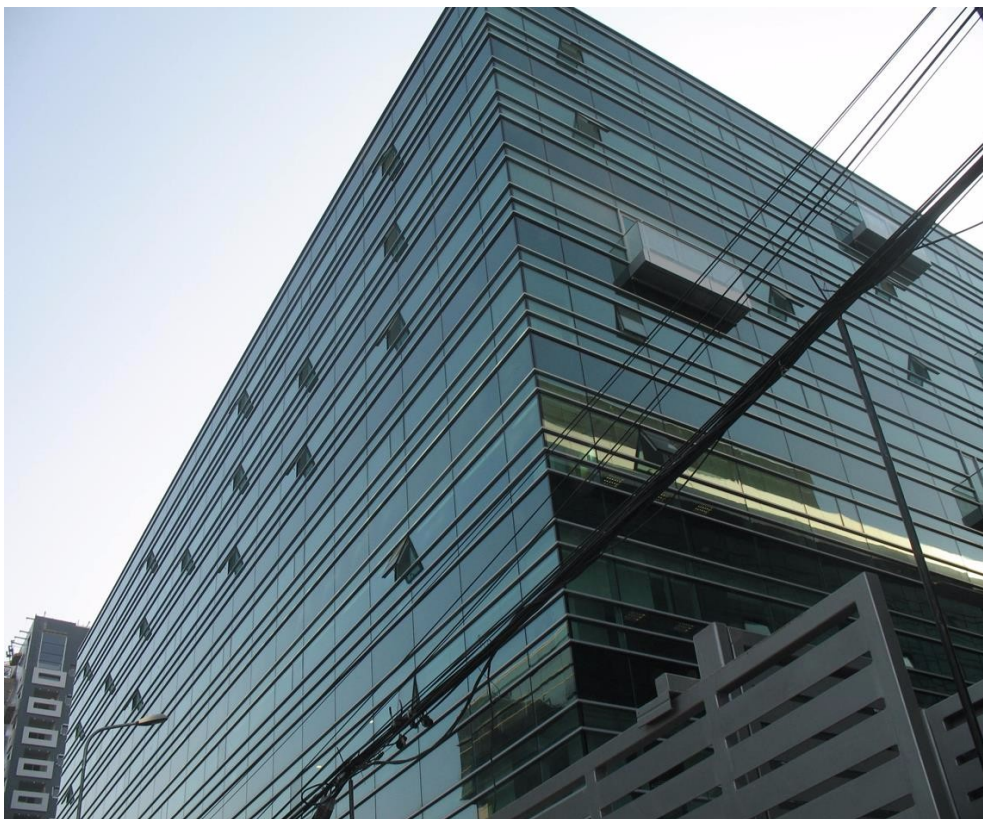


North

CARACTERISTICS

- ▶ **AREA:** North
- ▶ **Usable surface:** 9880 sqm
- ▶ **Maximum height:** P+7E



DESCRIPTION

The office building is situated in northern side of Bucharest very close to Dimitrie Pompeiu Boulevard and at only a few minutes distance from the subway station Pipera.

Facilities:

- open space / level;
- HVAC;
- elevators;
- power generator;
- video surveillance;
- 24 H security;
- fire prevention system;
- carpet;
- parking places;

Total usable area: 30,000 sqm;

Usable area/ level: 7,500 sqm;

Ground floor: 480 sqm

2nd Floor: 2,400 sqm

3rd Floor: 3,500 sqm

5th Floor: 3,500 sqm

REGATTA® - Leader of Romanian Real Estate Brands
Phone: 021.232.90.12, 021.232.90.88 /// E-mail: office@regatta.ro

*Receiving this presentation represents your agreement that any negotiation regarding this property to take place through the agency of a Regatta rep