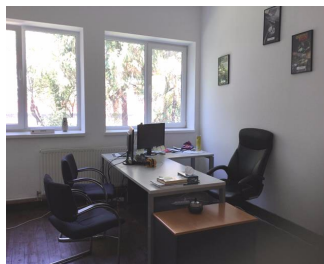
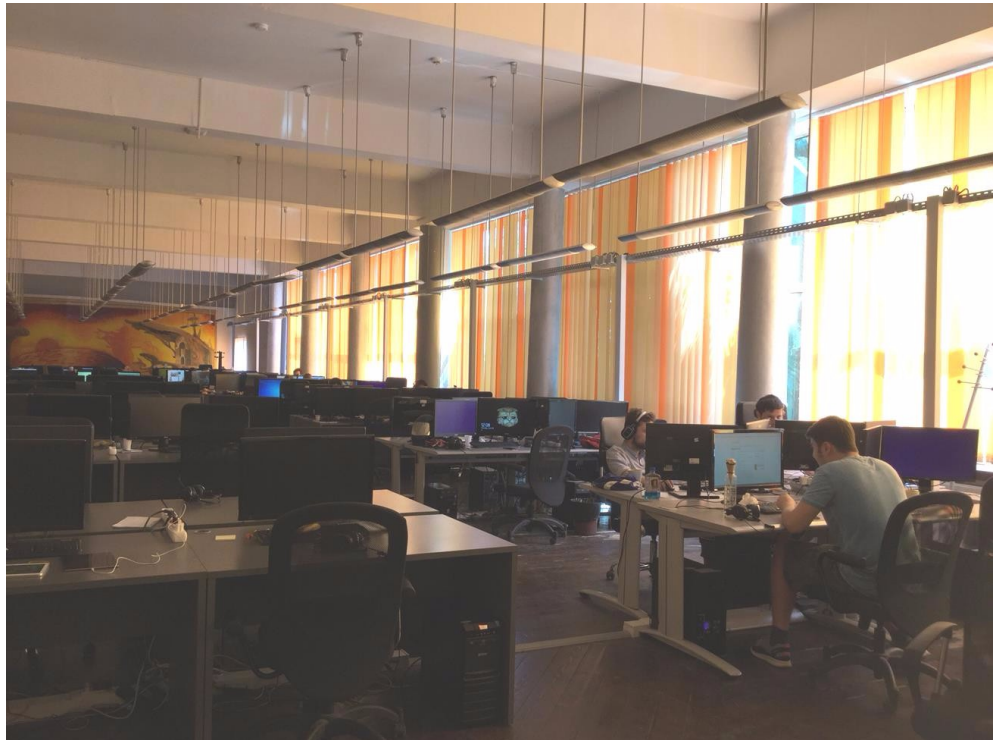


## Domenii

### CARACTERISTICS

- ▶ **AREA:** Domenii
- ▶ **Usable surface:** 1515 sqm
- ▶ **Floor:** 1



### DESCRIPTION

Office building offered for rent, situated in the center of Bucharest in Domenii - Parcul Copilului area. The property benefits of an easy access to all means of transportation including the subway Grivita station is at only 10 minutes distance.

#### Facilities:

- 24h security;
- dining room for the business center;
- all the utilities;
- air conditioning;
- court yard;
- terrace with place allocated for smokers or for eating;
- wash rooms;
- PC and phone network;
- parking place both outside and inside;
- Self-service both for maintenance and support;
- power transformer;

#### Available areas:

1st Floor: 605 sqm; 450 sqm, 460 sqm

10 EUR sqm + VAT

0.01 ETHEREUM sqm + VAT

REGATTA® - Leader of Romanian Real Estate Brands  
Phone: 021.232.90.12, 021.232.90.88 /// E-mail: [office@regatta.ro](mailto:office@regatta.ro)

\*Receiving this presentation represents your agreement that any negotiation regarding this property to take place through the agency of a Regatta rep