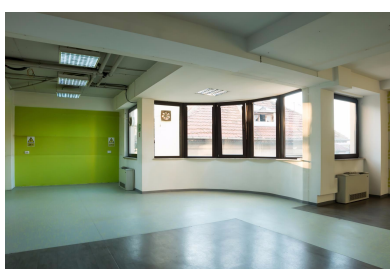


Calea Dorobantilor

CHARACTERISTICS

- ▶ **AREA:** Calea Dorobantilor
- ▶ **Usable surface:** 1393.55 sqm
- ▶ **Floor:** 2
- ▶ **Maximum height:** D+P+4E



FINISHES/EQUIPMENT

- ▶ **Others:** Alarm system, AC, Internet and Voice Connection , Insulated Windows , Faience, Sandstone, Elevator

DESCRIPTION

Office spaces offered for rent situated on Dorobanti avenue very close to Dorobanti Square and Primaverii neighborhood, at only a few minutes distance from Romana Square and Charles de Gaulle Square.

Total area: 1,393.55 sqm

2nd Floor: 298.70 sqm + common spaces

Rental prices: 13.5 Euro/sqm/month + VAT

Maintenance: 3.8 Euro/sqm/month +VAT

13.50 EUR sqm

REGATTA® - Leader of Romanian Real Estate Brands
Phone: 021.232.90.12, 021.232.90.88 /// E-mail: office@regatta.ro

*Receiving this presentation represents your agreement that any negotiation regarding this property to take place through the agency of a Regatta rep