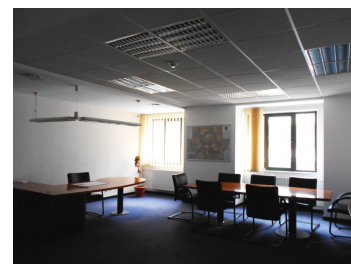
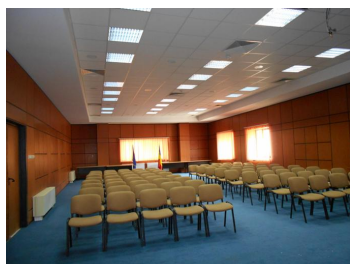


Ion Mihalache Blvd

Offices for Rent

CARACTERISTICS

- ▶ **AREA:** Ion Mihalache Blvd
- ▶ **Usable surface:** 3340 sqm
- ▶ **Maximum height:** D+P+3E



FINISHES/EQUIPMENT

- ▶ **Others:** Video Surveillance , Alarm system, Video Inter call , AC, Elevator, Internet and Voice Connection , Storage rooms, Garage, Sandstone, Faience, Insulated Windows

DESCRIPTION

Office space for rent situated at only 5 minutes away from Victoriei Square with direct access to Ion Mihalache Boulevard and to all means of transportation.

Facilities:

- security, reception
- elevator
- carpet
- 3rd Floor is arranged with rooms the one of a hotel;

11 EUR sqm + VAT

0.01 ETHEREUM sqm + VAT